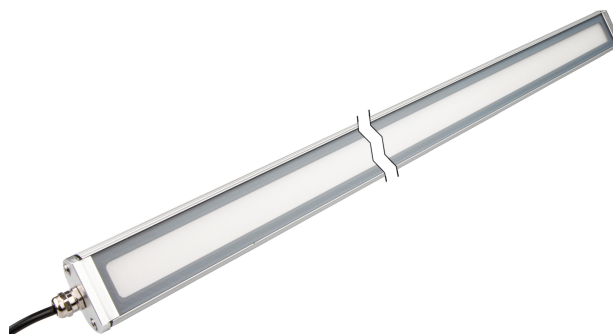


EM51010x machine light series

LED machine light, white light, 6000K, 24V DC, -30-50°C, cable tail PVC, IP67, aluminum+hard glass

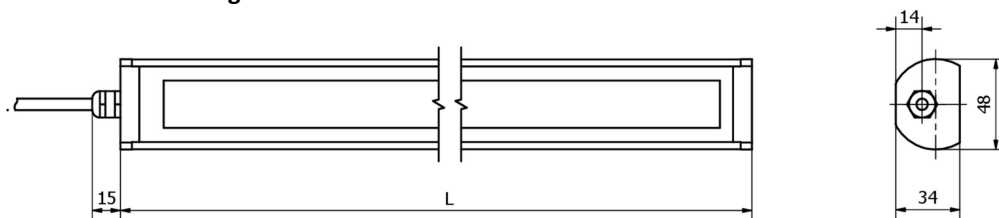


Luminaire holder included

These LED lights are robust and compact surface-mounted lights with high output. The aluminum housing dissipates heat effectively. The lights can be used at ambient temperatures of up to 50 °C. The color temperature is 6,000 K. The use of SMD LEDs produces a uniform and flicker-free light. Holders are included in the scope of delivery, which can be used to align the brackets of the lights.

Article No.	EM510100	EM510101	EM510102
ardSOCA_Abmessungen	300x51x60mm	600x51x60mm	800x51x60mm
ardSOCA_Betriebsspannung	24VDC		
Rated operating current	500 mA	1000 mA	1330 mA
Housing material	Aluminum		
Ambient temperature	-30 - 50 °C		
ardSOCA_ElektrischerAnschluss	Cable tail 2-core 1m		
ardTEEL_Schutzfunktionen	Verpolungsschutz		

Dimensional drawing



Article No.	L
EM510100	300 mm
EM510101	600 mm
EM510102	800 mm

Extract accessories program

NG400501



DC power supply, 1-phase,
125x114x40mm, 24-28V, 5A, 90-
264V AC 50Hz, 90-264V AC 60Hz,
127-370V DC, screw connection,
IP20, aluminum, stabilized, pulsed
output voltage

You can find further accessories on our homepage



Installation

Mounting / installation may only be carried out by a qualified electrician!



Disposal

WEEE number according to § 6 para. 3
ElektroG: 40951076

Safety warnings

- /** Before initial operation, please make sure to follow all safety instructions that may be provided in the product information.
- /** Never use these devices in applications where the safety of a person depends on their functionality.
- /** LED lighting systems can generate intensive UV radiation, which can damage your eyes in case of improper use. The manufacturer cannot be held responsible for damages that result from improper use or connection.